

# Neversink Culvert Assessment and Infrastructure Improvement Project



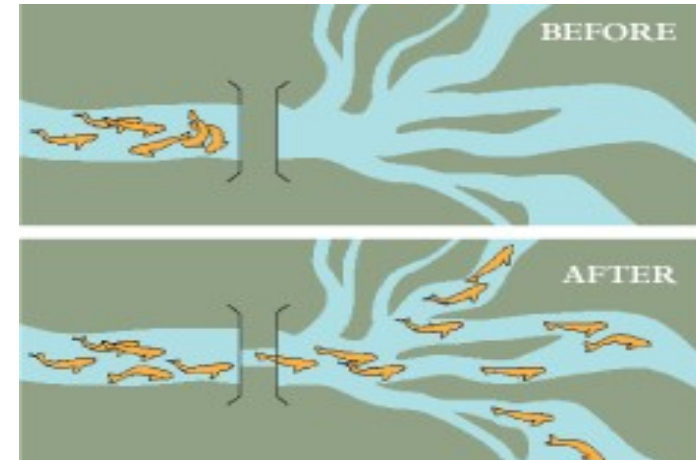
# Reconnecting Habitat For Community and Ecosystem Resiliency



Communities need safe and resilient road infrastructure.



Trout and other aquatic organisms need connected stream to thrive and to complete their life cycle.



**Focus on Road Stream Crossing Management and Improvement meets both goals!**

# Working with Local Towns



## The Town Reality

Lots of Road Miles

Lots of Road Stream Crossings

Not a Lot of Budget for Replacements

Every Town is different!

## How we can Help

Collect and Digest the Data

Help Identify Priorities

Develop Road Stream Crossing Plans to help for Future Planning

Work Closely with the Towns to determine how we can help

Design Structures that are suitable to Town Budgets and Resources

Find Money to Help Implement

**GET THE BEST  
PROJECTS  
DONE ON THE  
GROUND TO  
ACHIEVE  
MANY  
OBJECTIVES**

# Project Methods



Survey

Model

Prioritize

Implement

# Survey and Model

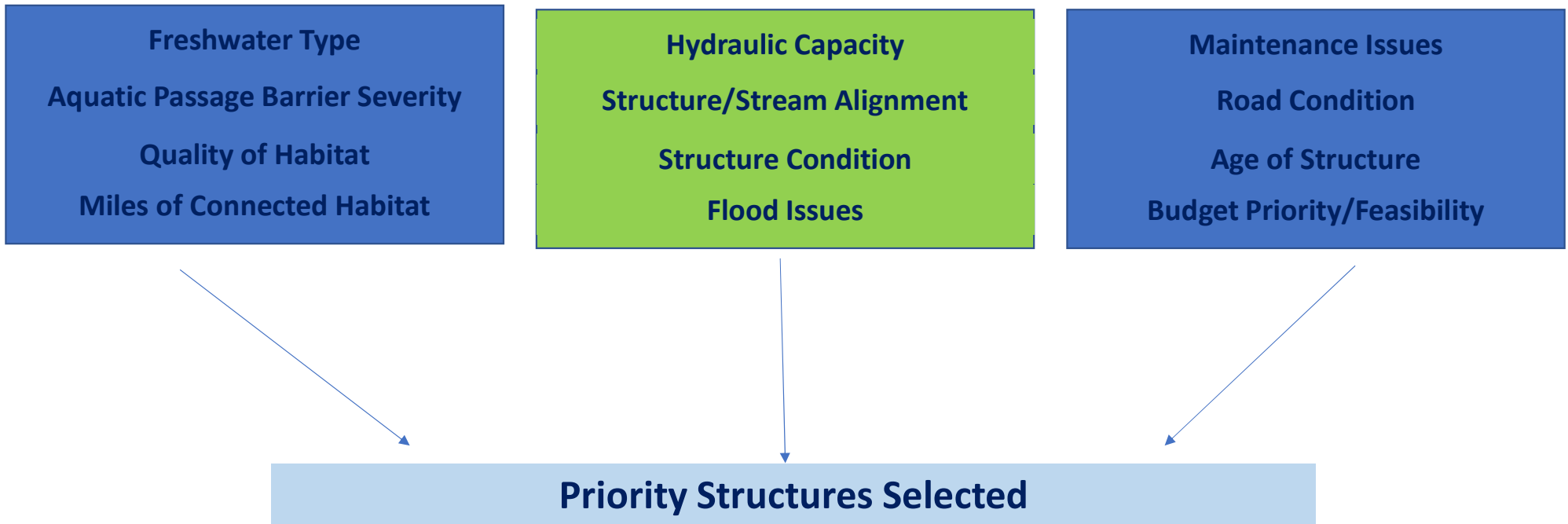


- Observations of the crossing
  - road type
  - flow condition
  - crossing alignment
  - material
  - inlet and outlet shape
  - dimensions
  - Condition
- NAACC Model for Aquatic Passage Severed – No Barrier



Equipment: stadia rod, measuring tape, level, camera, safety vests and data sheets

# Prioritizing Road Stream Crossings

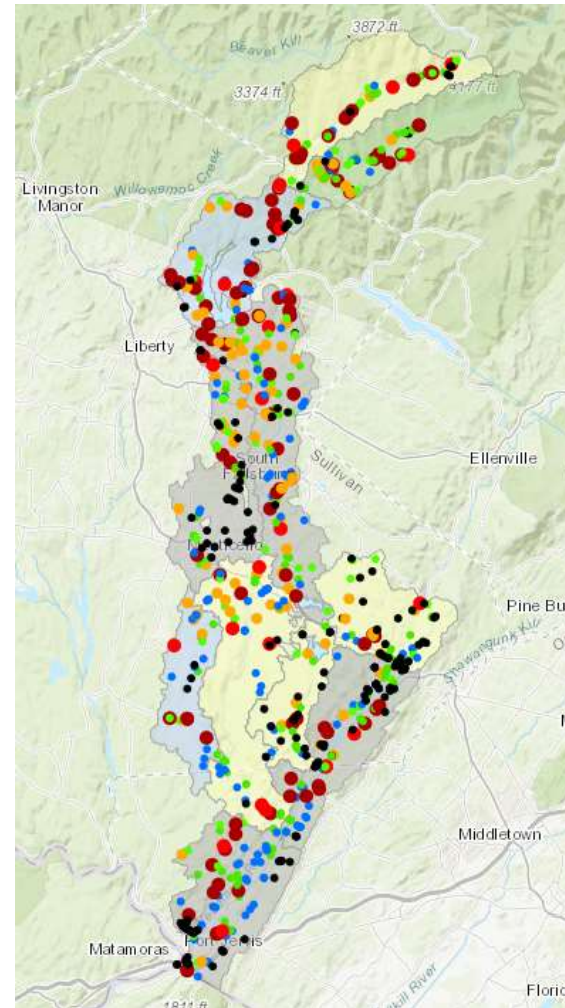


# Neversink Culvert Assessment Results

Goal is to identify 1 barrier in each of the municipalities that meet multiple objectives.

Create concept level designs for the project to be able to help plan and fundraise for replacement.

Toowship	Total	% total	Total Barriers	Total Miles	Trout Streams	Trout Stream Miles
Shandaken	8	0	1	0.35	1	0.35
Denning	103	55%	24	15.39	7	7.59
Thompson	81	59%	26	9.44	12	5.68
Neversink	110	62%	46	17.62	15	10.65
Fallsburg	114	61%	48	26.23	11	16.23
Forestburgh	29	21%	6	1.79	4	0.65
Deerpark	87	39%	12	6.15	7	3.81
Mamakating	300					
	832		163	76.97	57	44.96



- Severe barrier
- Significant barrier
- Moderate barrier
- Minor barrier
- Insignificant barrier
- No barrier
- Missing Data
- Unassessed
- Other